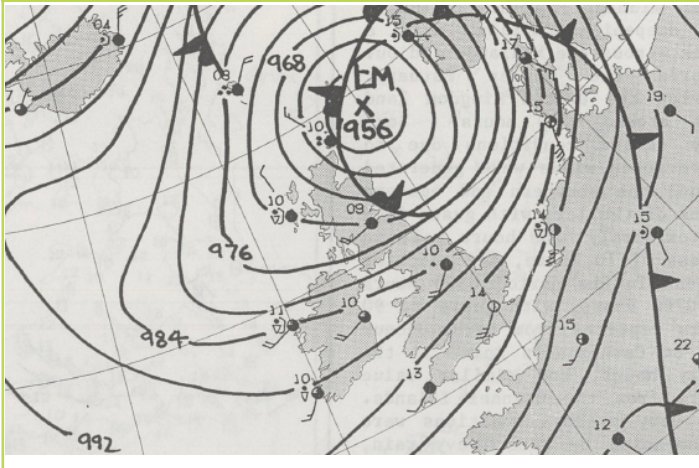


Weather chart for 1200 UTC on 16 October 1987

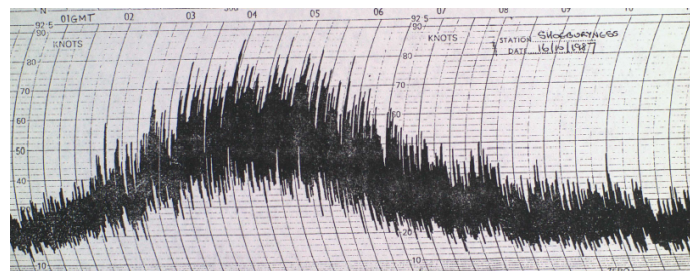
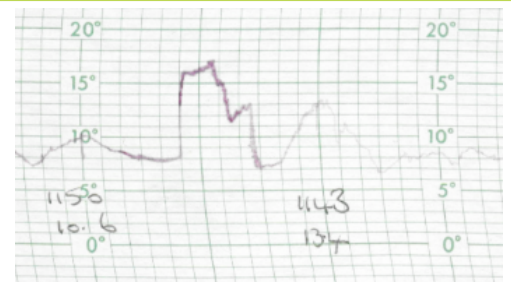
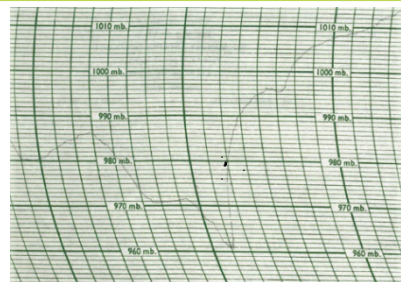


General summary

An intense depression crossed the coast of South Devon soon after midnight, moving quickly, and deepening rapidly, with a track across the Midlands and out towards the Humber Estuary. The very stormy conditions were accompanied by some heavy rain, this rain pushing into Scotland and parts of Northern Ireland after dawn. Clearer weather, on westerly winds, swept across southern Britain, pushing the worst of the stormy winds away into the North Sea. During the afternoon the country settled down to a blustery westerly with some heavy and thundery showers, running especially into western and southern coastal regions. Across Scotland and northern England the skies remained cloudy, with outbreaks of mostly light rain, but showers in the northwest later in the evening.

Significant weather event

Storm force winds were generated around the southern and eastern flank of the low, with gusts well in excess of 70 knots, reaching a peak in the period 0300 GMT to 0700 GMT, with gusts to 90 knots reported along the south coast. The central pressure of this depression at Exeter at 0200 GMT was 957 mb, making it the deepest depression to be centred over England or Wales in October in at least 150 years. Maximum observed pressure change in one hour: 12.2 mb at 0500 GMT at Hurn. Highest Hourly Mean Wind Speed: 75 knots (86.5 mph) at Royal Sovereign Lighthouse and highest gust of 100 knots (115 mph) at Shoreham-by-Sea. 18 people died as a direct result of this storm. The last storm of similar magnitude in England occurred in 1703.



Charts for 15/16 October 1987 showing significant changes in pressure (barogram for Shoreham - top left), temperature (thermogram for Bracknell, Beaufort Park - top right) and wind speed (anemogram for Shoeburyness - bottom).

Daily weather extremes

Highest Maximum Temperature

15.5 °C at Jersey, St Helier (Channel Islands)

Lowest Minimum Temperature

0.4 °C at Tummel Bridge (Tayside)

Most Rainfall

69.5 mm at Trawstynydd (Gwynedd)

Most Sunshine

8.1 hours at Newquay (Cornwall)