

Weather chart for 1200 UTC on 25 July 2019

General summary

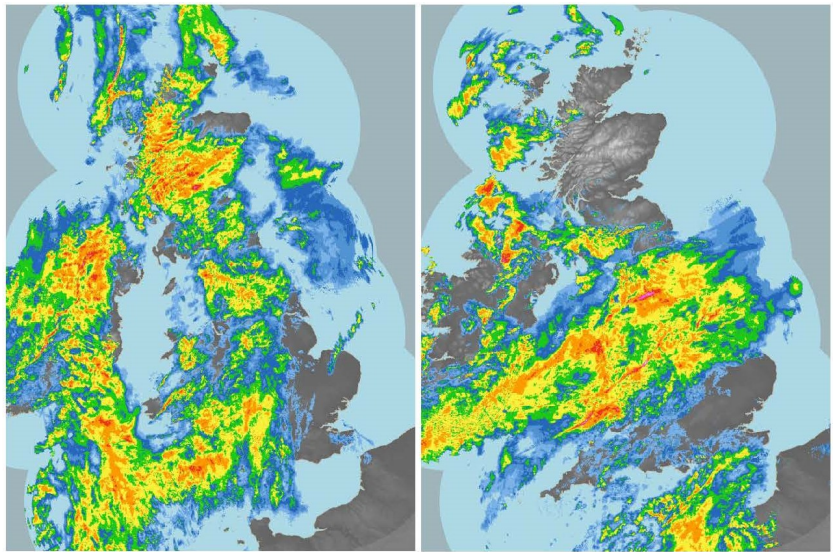
Storm Dennis, a deep low pressure driven by a powerful Atlantic jet stream, brought heavy and persistent rain across much of the UK – especially Wales and western England on 15 -16 February. Western upland parts of the UK received 50 to 100mm or more of rain falling on already saturated ground following Storm Ciara the week before. The Met Office issued a Red Warning for rain across parts of south Wales and there was major and widespread flooding. More than the rainfall to be expected for the whole month fell across parts of the west and north Midlands.

Storm Dennis also brought persistent very strong winds with gusts over 50Kt across the UK and over 60Kt around exposed coastlines but the worst of the impacts were from the rain.

Significant weather event

South Wales, Herefordshire, Worcestershire and Shropshire were worst affected by flooding and major incidents were declared. The River Wye and River Severn reached their highest-ever levels and areas of several towns including Hereford and Pontypridd were inundated. The Environment Agency issued over 600 flood warnings and alerts including several severe flood warnings.

A woman was swept away by floodwater in Worcestershire and over 1400 homes and businesses were flooded across several counties. The flooding also caused major travel disruption with roads blocked, damaged railway lines and hundreds of flights cancelled. Strong winds and large waves battered exposed coastlines, and in County Cork an abandoned 'ghost' cargo ship was washed ashore.



Rain-radar images at 12 UTC 15th and 00 UTC 16th February 2020 showing the heavy and persistent rainfall from storm Dennis with fronts sweeping across the UK.

Daily weather extremes

Highest Maximum Temperature

38.7 °C at Cambridge Botanic Garden (Cambridgeshire)

Lowest Minimum Temperature

10.5 °C at Ravensworth (North Yorkshire)

Most Rainfall

11.6 mm at Charsfield (Suffolk)

Most Sunshine

14.1 hours at St. Harmon No 2 (Powys)