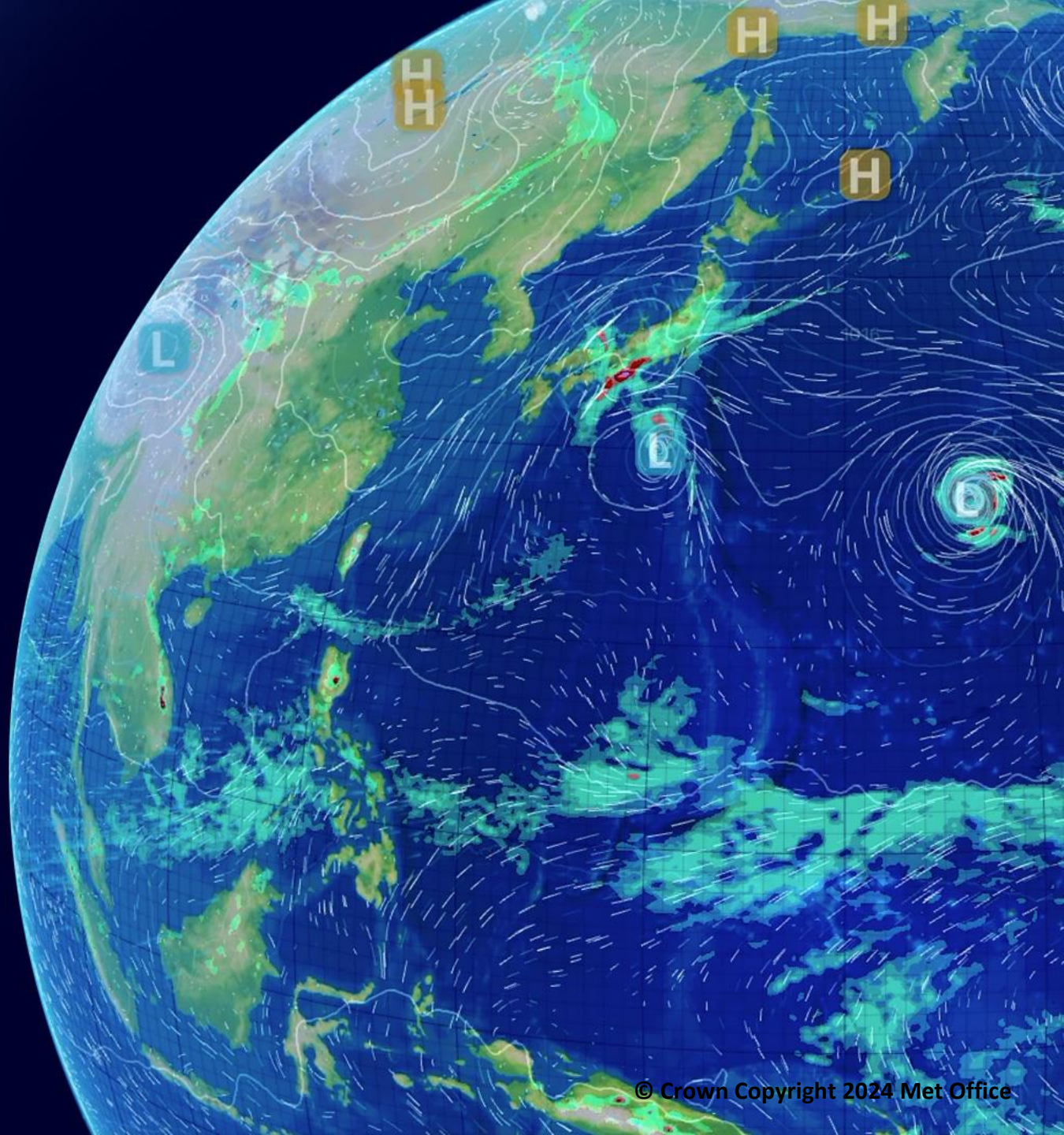




# Winter 2023/24 LVP Forecast Verification: LL, KK, GW, SS, GD & CC

*NATS Met Office Team*



- Issued twice daily
  - 0325 L
  - 1710 UTC
- Consistent with TAFs, warnings forecast valid at time of issue
- Amendable for LTMA airfields
- Analysis of the period 0400-1800 UTC
- Skilful tolerances:

|    |        |
|----|--------|
| N  | <5%    |
| L  | 5-29%  |
| ML | 30-39% |
| MH | 40-59% |
| H  | 60-89% |
| VH | >90%   |

With contribution for  
EIDW from Met Eireann

**Key UK and Ireland Aerodromes 24hr LVP Risk (AM issue)**  
0400Z on 22 February 2023 to 0400Z on 23 February 2023  
(All times in UTC)

LVP risk at elevated airfields due to lowering cloud. Likely clearing by mid morning, but a risk returns overnight into Thursday.  
LC risk : 400FT cloud base for both periods.

| Aerodrome  | 22 February 2023 |       |       |       |       |       |       |       |       |       |       |       |       |       |       |       |       |       |       |       | 23 February 2023 |       |       |       |
|------------|------------------|-------|-------|-------|-------|-------|-------|-------|-------|-------|-------|-------|-------|-------|-------|-------|-------|-------|-------|-------|------------------|-------|-------|-------|
|            | 04-05            | 05-06 | 06-07 | 07-08 | 08-09 | 09-10 | 10-11 | 11-12 | 12-13 | 13-14 | 14-15 | 15-16 | 16-17 | 17-18 | 18-19 | 19-20 | 20-21 | 21-22 | 22-23 | 23-24 | 00-01            | 01-02 | 02-03 | 03-04 |
| LL*        | N                | N     | N     | N     | N     | N     | N     | N     | N     | N     | N     | N     | N     | N     | N     | N     | N     | N     | N     | N     | N                | N     | N     | N     |
| LL (VIS2)* | N                | L     | L     | L     | N     | N     | N     | N     | N     | N     | N     | N     | N     | N     | N     | N     | N     | N     | N     | N     | N                | N     | N     | L     |
| KK**       | N                | N     | N     | N     | N     | N     | N     | N     | N     | N     | N     | N     | N     | N     | N     | N     | N     | N     | N     | N     | N                | N     | N     | N     |
| SS*        | N                | N     | N     | N     | N     | N     | N     | N     | N     | N     | N     | N     | N     | N     | N     | N     | N     | N     | N     | N     | N                | N     | N     | N     |
| GW^        | ML               | ML    | ML    | ML    | ML    | L     | N     | N     | N     | N     | N     | N     | N     | N     | N     | N     | N     | N     | N     | L     | L                | L     | L     | L     |
| LC**       | ML               | ML    | ML    | ML    | ML    | L     | N     | N     | N     | N     | N     | N     | N     | N     | N     | N     | N     | N     | N     | L     | L                | L     | L     | L     |
| LF*        | N                | N     | N     | N     | N     | N     | N     | N     | N     | N     | N     | N     | N     | N     | N     | N     | N     | N     | N     | N     | N                | N     | N     | N     |
| BB***      | N                | N     | N     | N     | N     | N     | N     | N     | N     | N     | N     | N     | N     | N     | N     | N     | N     | N     | N     | N     | N                | N     | N     | N     |
| NX^^       | N                | N     | N     | N     | N     | N     | N     | N     | N     | N     | N     | N     | N     | N     | N     | N     | N     | N     | N     | N     | N                | N     | N     | N     |
| GD^^^      | H                | H     | MH    | MH    | MH    | L     | N     | N     | N     | N     | N     | N     | N     | N     | N     | N     | N     | N     | N     | N     | N                | L     | L     | L     |
| CC***      | N                | N     | N     | N     | N     | N     | N     | N     | N     | N     | N     | N     | N     | N     | N     | N     | N     | N     | N     | N     | N                | N     | N     | N     |
| PH***      | N                | N     | N     | N     | N     | N     | N     | N     | N     | N     | N     | N     | N     | N     | N     | N     | N     | N     | N     | N     | N                | N     | N     | N     |
| PF***      | N                | N     | N     | N     | N     | N     | N     | N     | N     | N     | N     | N     | N     | N     | N     | N     | N     | N     | N     | N     | N                | N     | N     | N     |
| EIDW^      | N                | N     | N     | N     | N     | N     | N     | N     | N     | N     | N     | N     | N     | N     | N     | N     | N     | N     | N     | N     | N                | N     | N     | N     |

|     |   |  |     |   |
|-----|---|--|-----|---|
| *   | LVP threshold - visibility <600m                              |  | ^   | LVP threshold - visibility <800m and/or cloud ceiling <200FT  |
| **  | LVP threshold - visibility <600m and/or cloud ceiling <200FT  |  | ^^  | LVP threshold - visibility ≤800m and/or cloud ceiling <300FT  |
| *** | LVP threshold - visibility <600m and/or cloud ceiling <300FT  |  | ^^^ | LVP threshold - visibility ≤1200m and/or cloud ceiling ≤200FT |
| +   | LVP threshold - visibility <1500m and/or cloud ceiling <300FT |  | **  | LVP threshold - visibility <1600m and/or cloud ceiling ≤500FT |

| LVP Status | Comments  | % Risk |
|------------|---|--------|
| N          | Fog/LVP risk considered to be NIL   | <5%    |
| L          | Fog/LVP risk considered to be "Low" but not NIL, would not normally appear in the TAF   | 5-29%  |
| ML         | Fog/LVP risk considered to be "moderate", there remains uncertainty in its occurrence and remains less likely than more   | 30-39% |
| MH         | Fog/LVP risk considered to be "moderate", there remains uncertainty in its occurrence but it is a balance between likely/less likely                                | 40-59% |
| H          | Fog/LVP risk considered to be "high", it is now more likely than not  | 60-89% |
| VH         | Fog/LVP risk considered to be "very high", it is likely this will be used when an airfield is in LVP conditions and the forecast is mainly concerned with clearance | >90%   |

## 2023/2024 D-1\* Verification

|    |      | N    | L    | ML    | MH   | H | VH |
|----|------|------|------|-------|------|---|----|
| LL | D-1  | 201  | 31   | 9     | 1    | 0 | 0  |
|    | LVPs | 1    | 1    | 2     | 0    | 0 | 0  |
|    | Rate | 0.5% | 3.2% | 22.2% | 0.0% | - | -  |

|    |      | N    | L    | ML    | MH    | H    | VH |
|----|------|------|------|-------|-------|------|----|
| KK | D-1  | 153  | 61   | 23    | 4     | 1    | 0  |
|    | LVPs | 0    | 4    | 4     | 1     | 0    | 0  |
|    | Rate | 0.0% | 6.6% | 17.4% | 25.0% | 0.0% | -  |

|    |      | N    | L    | ML    | MH    | H     | VH |
|----|------|------|------|-------|-------|-------|----|
| SS | D-1  | 156  | 47   | 25    | 9     | 5     | 0  |
|    | LVPs | 2    | 4    | 7     | 2     | 3     | 0  |
|    | Rate | 1.3% | 8.5% | 28.0% | 22.2% | 60.0% | -  |

|    |      | N    | L     | ML    | MH    | H     | VH |
|----|------|------|-------|-------|-------|-------|----|
| GW | D-1  | 113  | 71    | 29    | 21    | 8     | 0  |
|    | LVPs | 1    | 9     | 19    | 10    | 5     | 0  |
|    | Rate | 0.9% | 12.7% | 65.5% | 47.6% | 62.5% | -  |

|    |      | N     | L     | ML    | MH    | H     | VH |
|----|------|-------|-------|-------|-------|-------|----|
| GD | D-1  | 96    | 54    | 41    | 31    | 20    | 0  |
|    | LVPs | 10    | 14    | 20    | 21    | 18    | 0  |
|    | Rate | 10.4% | 25.9% | 48.8% | 67.7% | 90.0% | -  |

|    |      | N    | L    | ML    | MH    | H      | VH |
|----|------|------|------|-------|-------|--------|----|
| CC | D-1  | 182  | 39   | 16    | 4     | 1      | 0  |
|    | LVPs | 3    | 3    | 4     | 1     | 1      | 0  |
|    | Rate | 1.6% | 7.7% | 25.0% | 25.0% | 100.0% | -  |

\*1710 UTC Issue of LVP matrix day before



## 2023/2024 D0\* Verification

|    |      | N    | L    | ML    | MH   | H      | VH |
|----|------|------|------|-------|------|--------|----|
| LL | D0   | 205  | 27   | 7     | 2    | 1      | 0  |
|    | LVPs | 0    | 2    | 1     | 0    | 1      | 0  |
|    | Rate | 0.0% | 7.4% | 14.3% | 0.0% | 100.0% | -  |

|    |      | N    | L    | ML    | MH   | H    | VH     |
|----|------|------|------|-------|------|------|--------|
| KK | D0   | 166  | 46   | 20    | 6    | 1    | 3      |
|    | LVPs | 1    | 1    | 4     | 0    | 0    | 3      |
|    | Rate | 0.6% | 2.2% | 20.0% | 0.0% | 0.0% | 100.0% |

|    |      | N    | L    | ML    | MH    | H     | VH     |
|----|------|------|------|-------|-------|-------|--------|
| SS | D0   | 154  | 45   | 23    | 12    | 4     | 4      |
|    | LVPs | 2    | 2    | 4     | 3     | 2     | 4      |
|    | Rate | 1.3% | 4.4% | 17.4% | 25.0% | 50.0% | 100.0% |

|    |      | N    | L     | ML    | MH    | H     | VH     |
|----|------|------|-------|-------|-------|-------|--------|
| GW | D0   | 120  | 61    | 18    | 25    | 12    | 6      |
|    | LVPs | 0    | 11    | 8     | 9     | 10    | 6      |
|    | Rate | 0.0% | 18.0% | 44.4% | 36.0% | 83.3% | 100.0% |

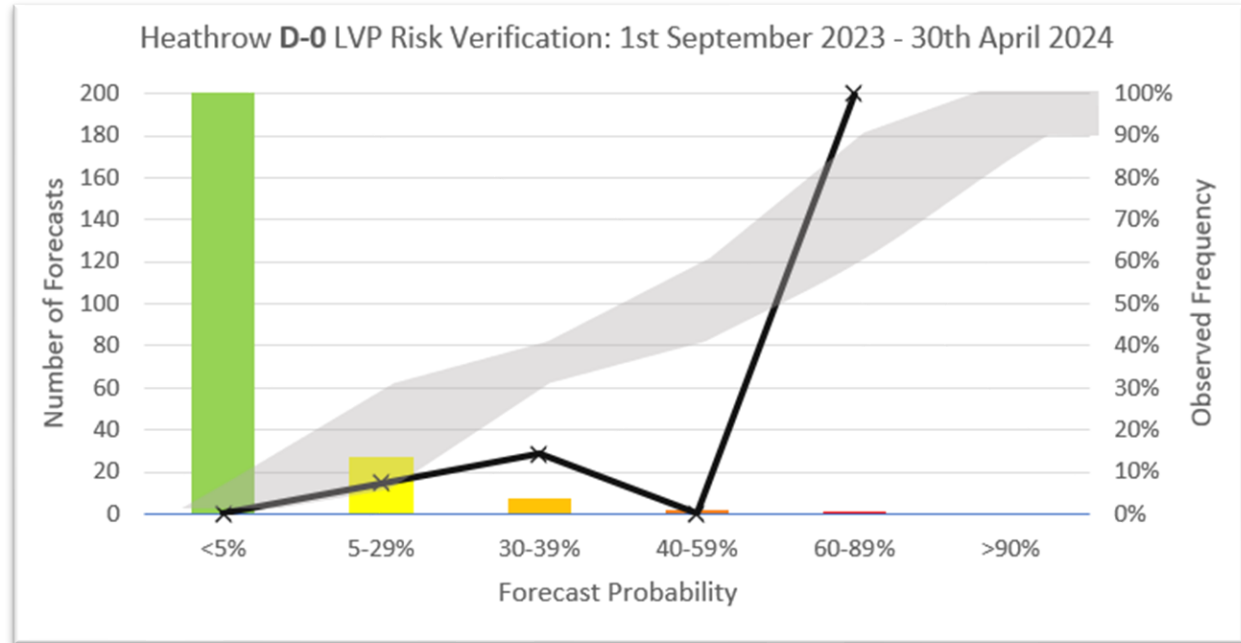
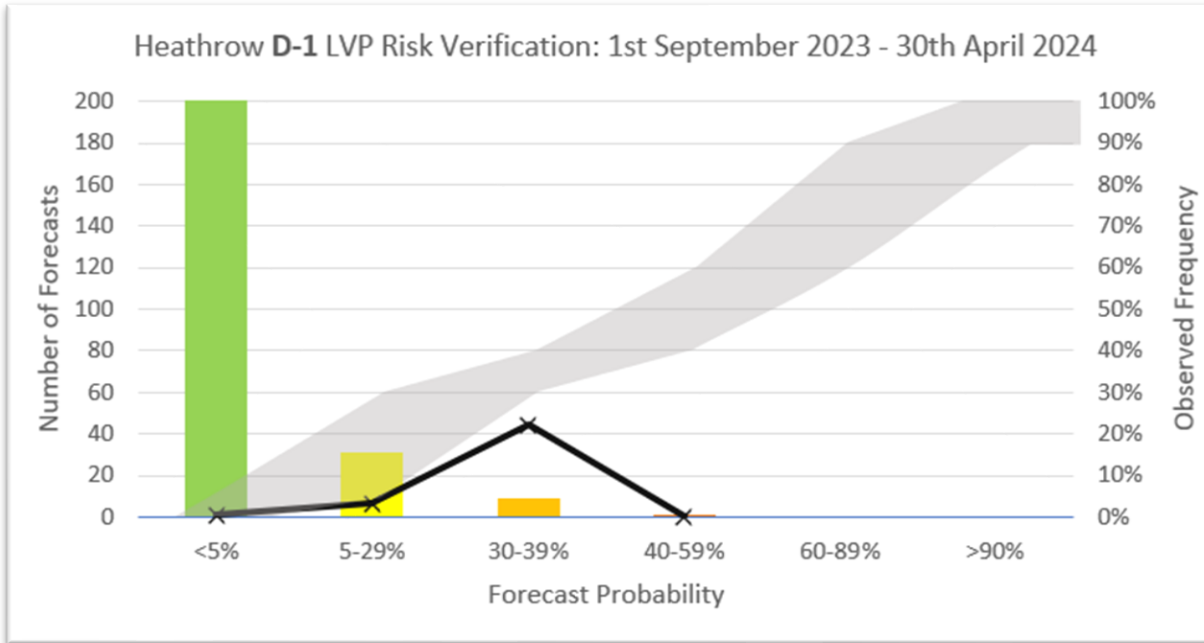
|    |      | N    | L     | ML    | MH    | H     | VH     |
|----|------|------|-------|-------|-------|-------|--------|
| GD | D0   | 107  | 43    | 34    | 31    | 20    | 7      |
|    | LVPs | 7    | 14    | 19    | 19    | 15    | 7      |
|    | Rate | 6.5% | 32.6% | 55.9% | 61.3% | 75.0% | 100.0% |

|    |      | N    | L    | ML    | MH    | H      | VH     |
|----|------|------|------|-------|-------|--------|--------|
| CC | D0   | 185  | 38   | 13    | 3     | 2      | 1      |
|    | LVPs | 2    | 1    | 5     | 1     | 2      | 1      |
|    | Rate | 1.1% | 2.6% | 38.5% | 33.3% | 100.0% | 100.0% |

\*0325 L Issue of LVP matrix

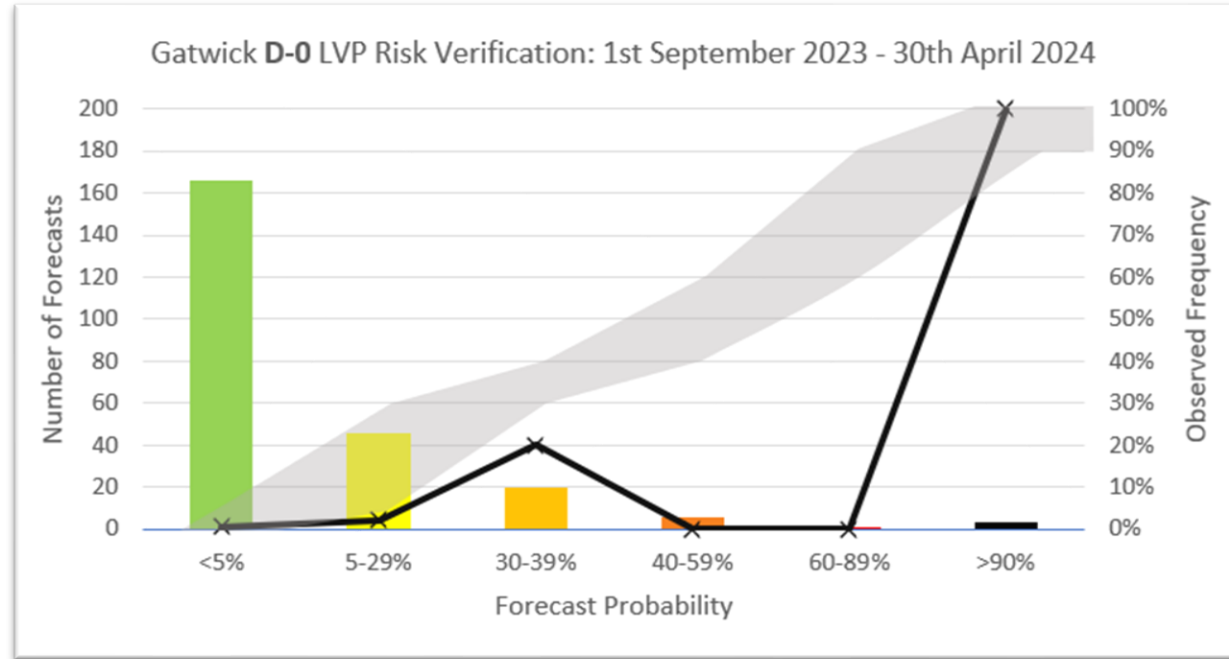
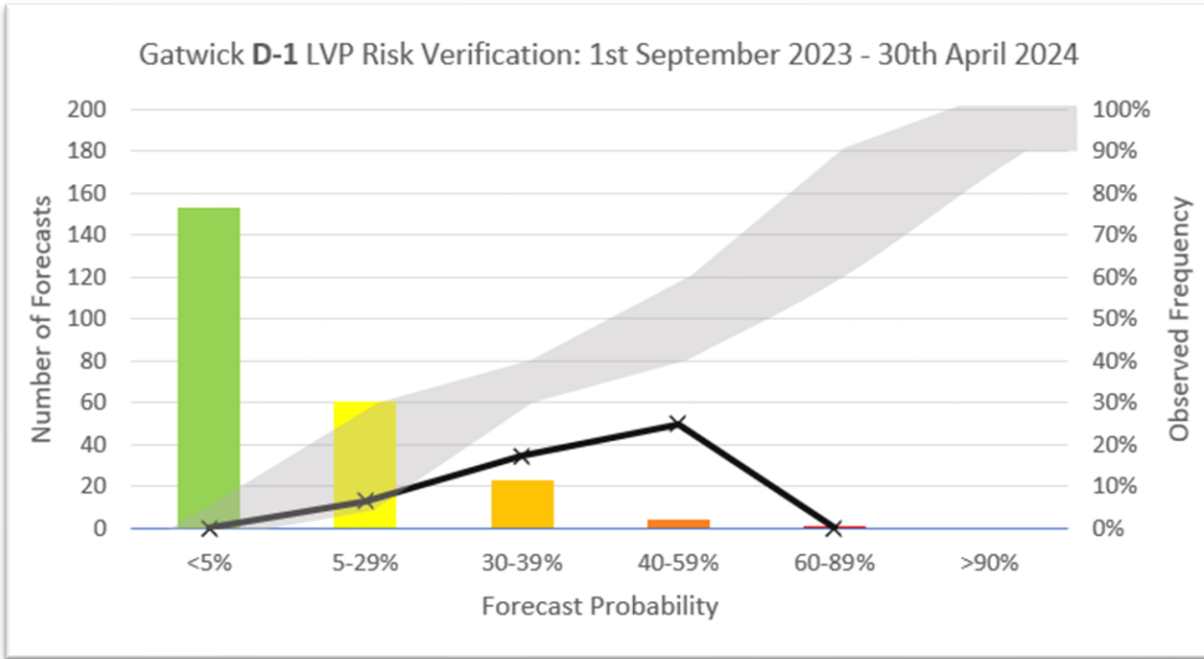
# Heathrow D-1 and D0 Graphs

LVP threshold:  
Visibility <600 m



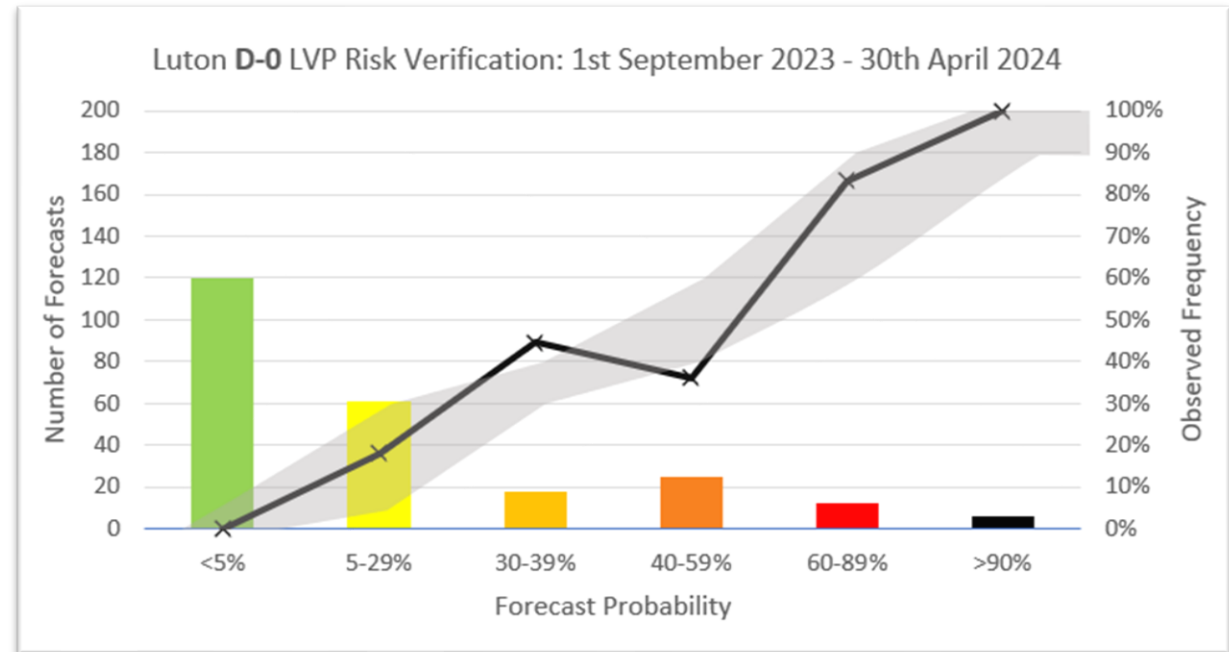
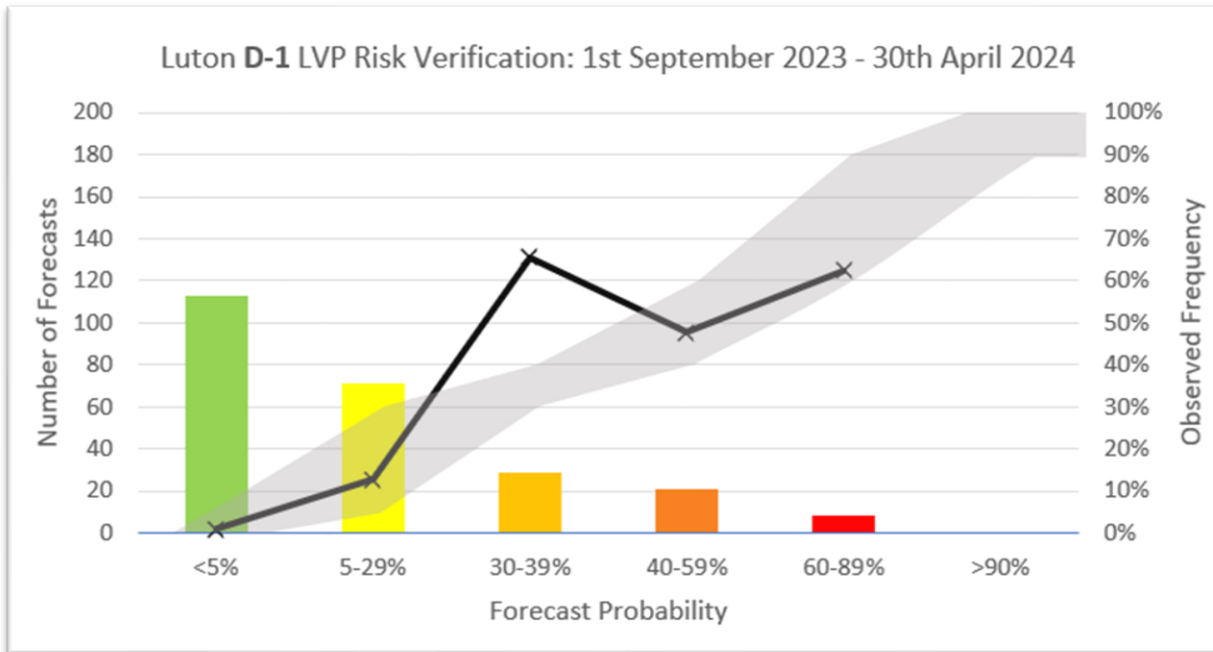
# Gatwick D-1 and D0 Graphs

LVP threshold:  
 Visibility <600 m  
 Cloud ceiling <200 ft



# Luton D-1 and D0 Graphs

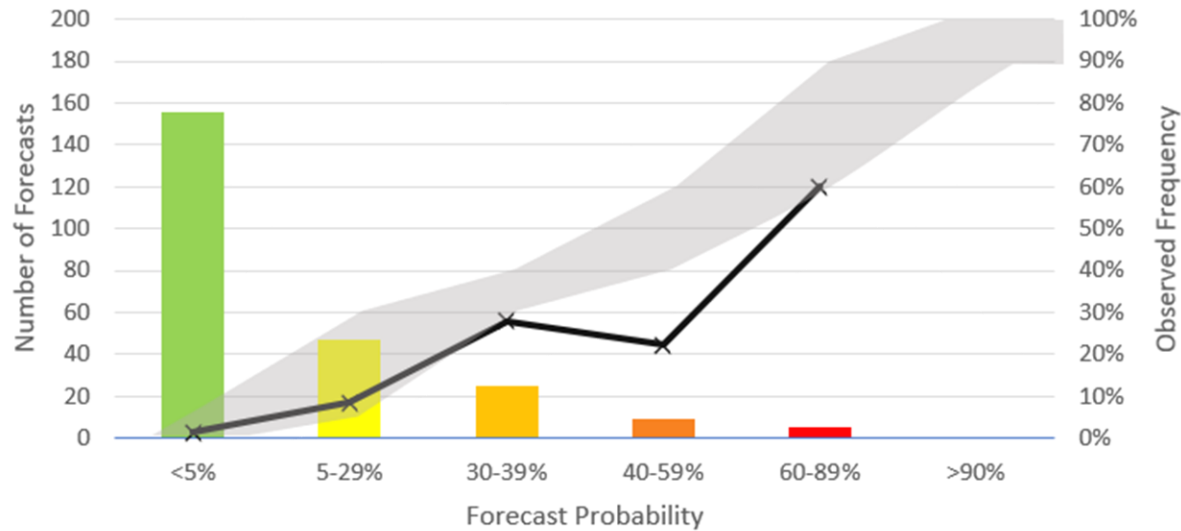
LVP threshold:  
 Visibility <800 m  
 Cloud ceiling <200 ft



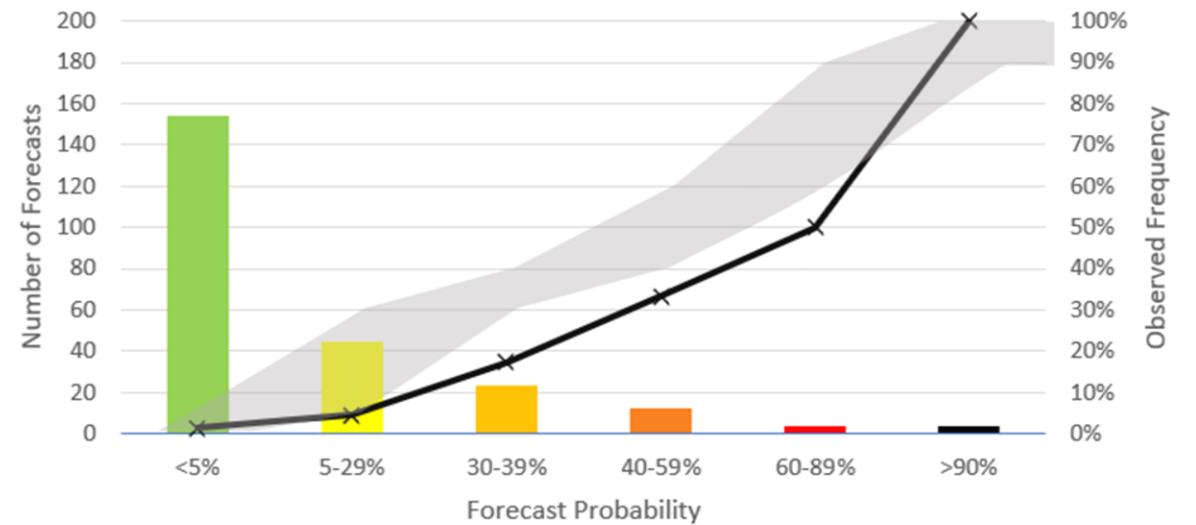
# Stansted D-1 and D0 Graphs

LVP threshold:  
Visibility <600 m

Stansted D-1 LVP Risk Verification: 1st September 2023 - 30th April 2024



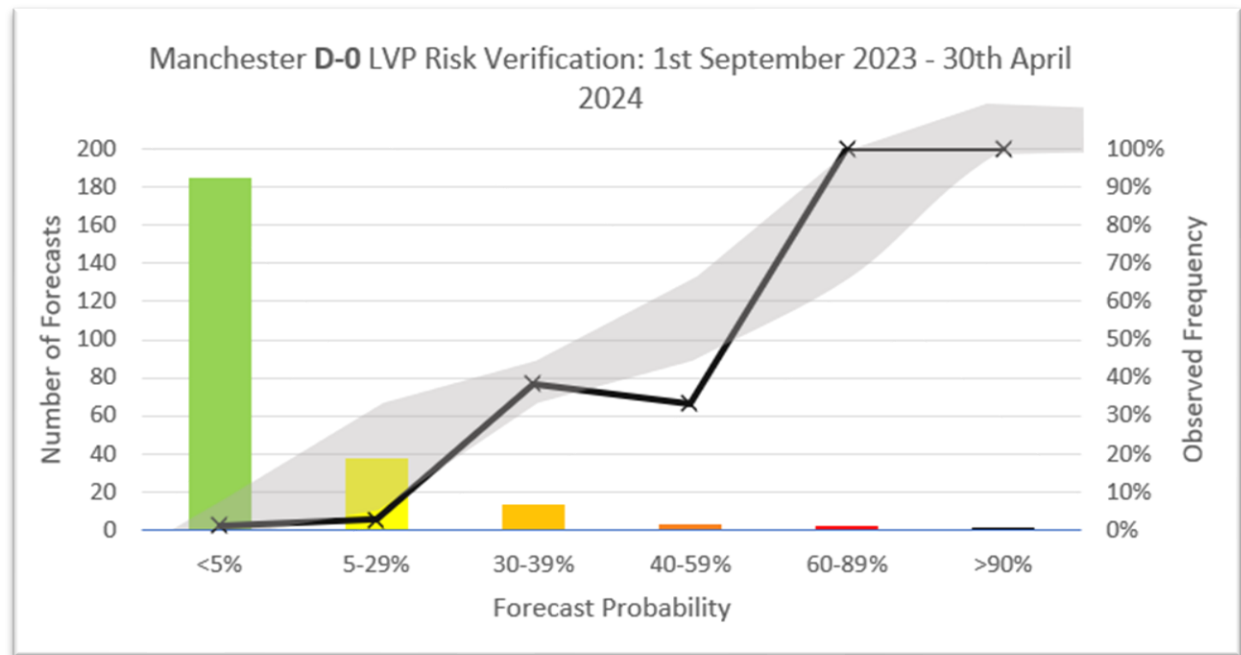
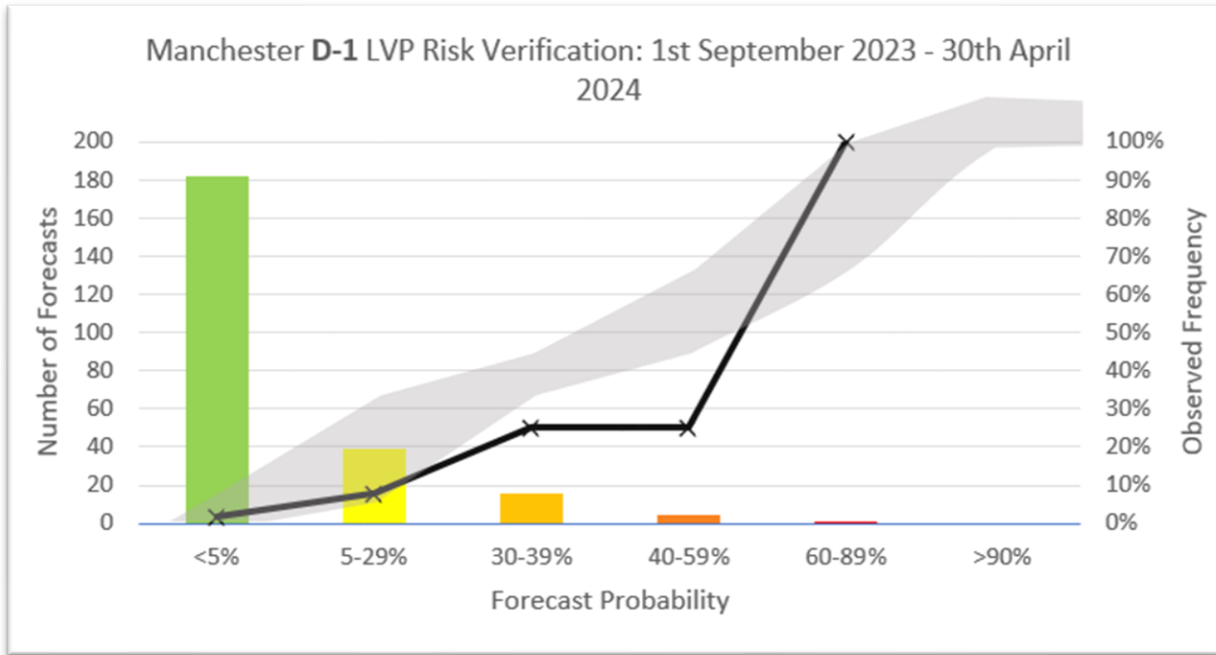
Stansted D-0 LVP Risk Verification: 1st September 2023 - 30th April 2024





# Manchester D-1 and D0 Graphs

LVP threshold:  
 Visibility <600 m  
 Cloud ceiling <300 ft



# Bristol D-1 and D0 Graphs

LVP threshold:  
 Visibility  $\leq 1200$  m  
 Cloud ceiling  $\leq 200$  ft

