

# Exploring weather impacts

**1** If the group is new to this topic start by showing them the **Bringing data to life film, here**. Ask them what they think is meant by ‘weather data’? (I.e. it can refer to observed and forecast data, as well as data that reflects the actual and predicted impacts of the weather)

**2** This is a hands-on activity involving data, impact and industry cards on pages 3–7. Hand out a card to everyone. Each card will contain either a visualisation of weather data, a description of the weather or an impact. If you’re working with more than 15 young people, you might want to ask them to work in pairs, and give a card to each pair.

Everyone must arrange themselves into the correct grouping of three relevant to their cards.

Each data visualisation corresponds to a card outlining the weather impact and an industry that depends on this type of visualisation to make decisions. For example, in the first set:



15 minutes



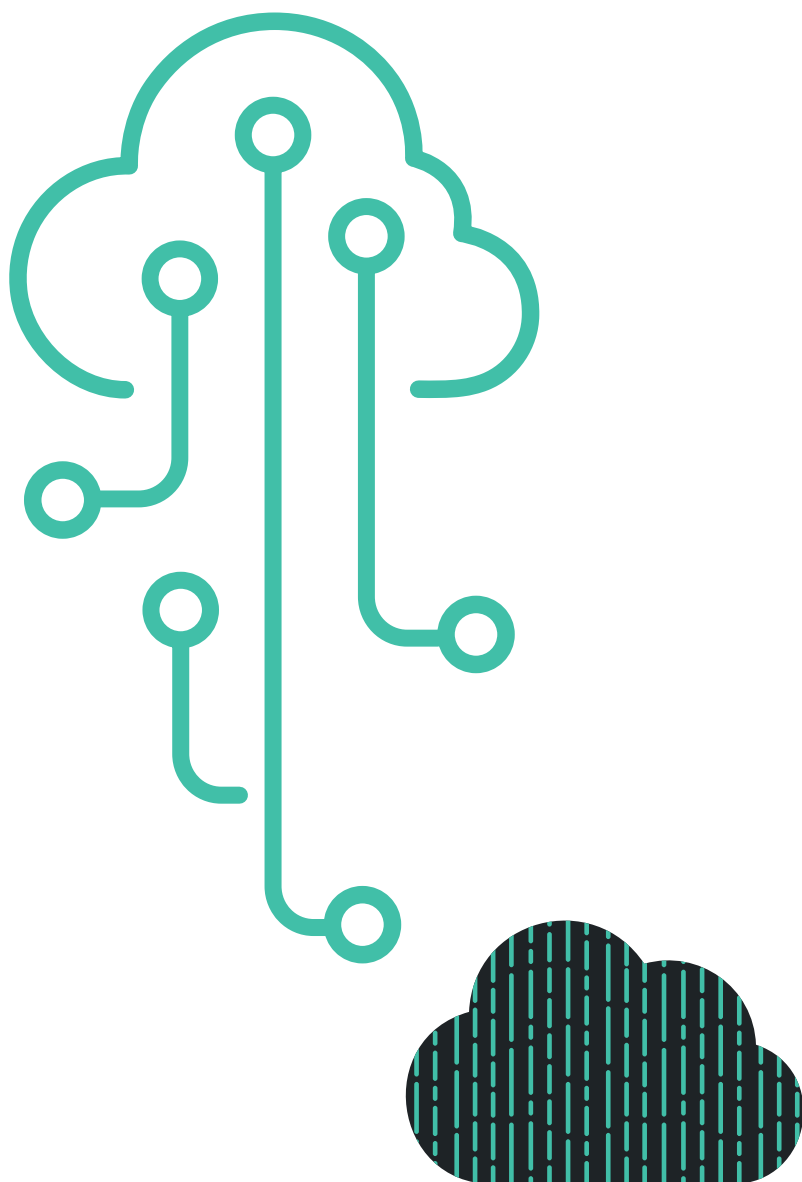
Groupwork



Data, impact and industry cards

- Card 1: a graph showing temperature increase and low rainfall for a given month
- Card 2: a description of the drought
- Card 3: its risk to agriculture

**3** Once all the groups are assembled, ask a representative from each group to explain their cards and their rationale for choosing to stand or sit together.

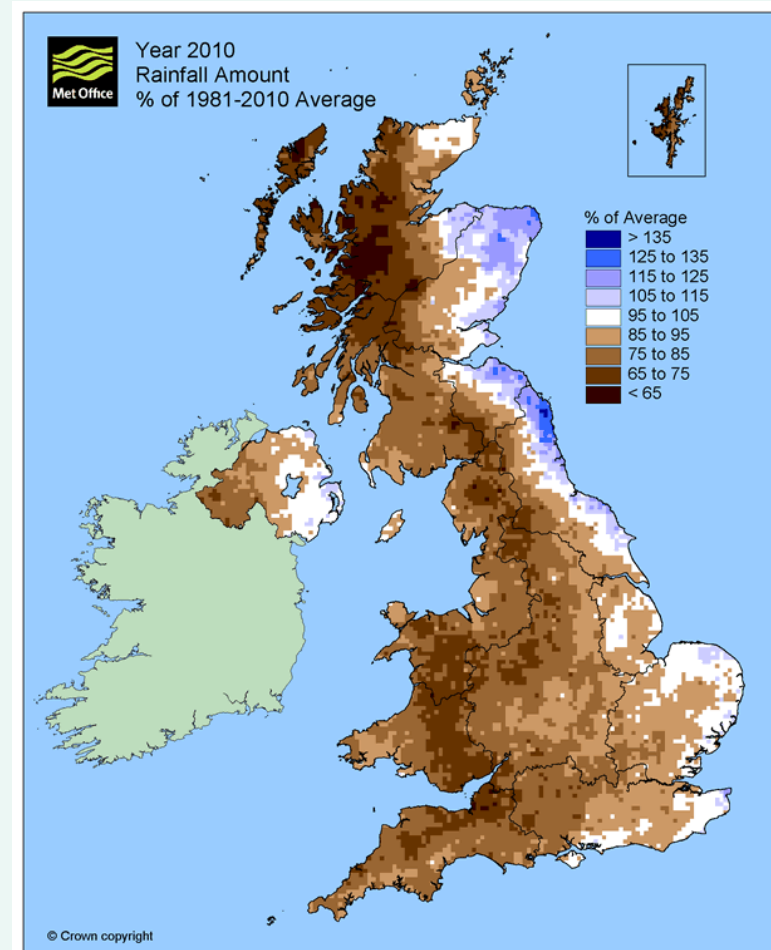


# Data, impact and industry cards

## Drought

**Description:** When rainfall is below-average in an area for a prolonged period, water shortages can occur.

**Risk it poses:** River and reservoir levels begin to drop, groundwater levels drop and risk of wildfire increases. In extreme cases crops can fail as the soil does not contain sufficient moisture to keep them alive.



# Data, impact and industry cards

## High pollen count

**Description:** Trees, plants and flowers release high amounts of pollen.

**Risk it poses:** Adults and children suffering from hay fever, which is particularly hard for people who have other conditions like asthma; meaning an increased number of people requiring medication and treatment.

The pollen season includes three main phases:



Tree pollen

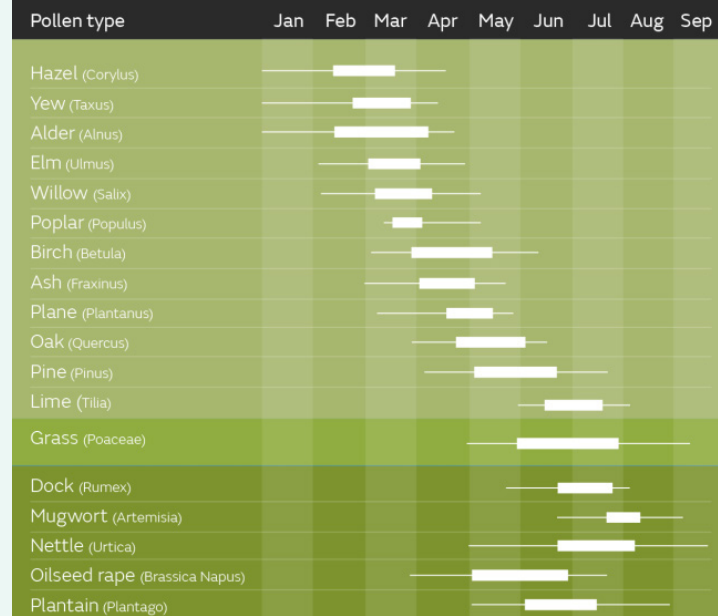


Grass pollen



Weed pollen

## Pollen Calendar

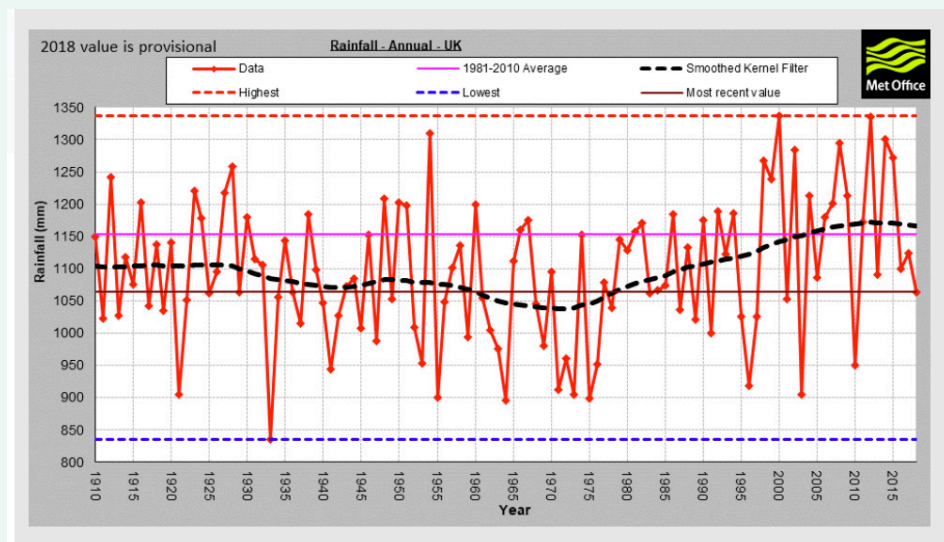


# Data, impact and industry cards

## Flooding

**Description:** Overflow of water on land, normally due to unusually heavy rain or from the sea.

**Risk it poses:** Homes can be uninhabitable due to water damage. Transport and energy infrastructure is affected. People might be evacuated. Bridges can be destroyed and the natural environment can be damaged.



# Data, impact and industry cards

## Heatwave

**Description:** A prolonged period of hot weather, which may be accompanied by high humidity.

**Risk it poses:** A higher number of people suffer from heat-related illnesses such as sunstroke and heatstroke, causing a sudden strain on healthcare services.



# Data, impact and industry cards

## Snow

**Description:** Tiny ice crystals in clouds stick together to become snowflakes. If enough crystals stick together, they'll become heavy enough to fall to the ground.

**Risk it poses:** Transport can be disrupted, with rail and air services delayed due to snow on the tracks and runways, roads becoming impassable, and pavements being slippery for pedestrians.

