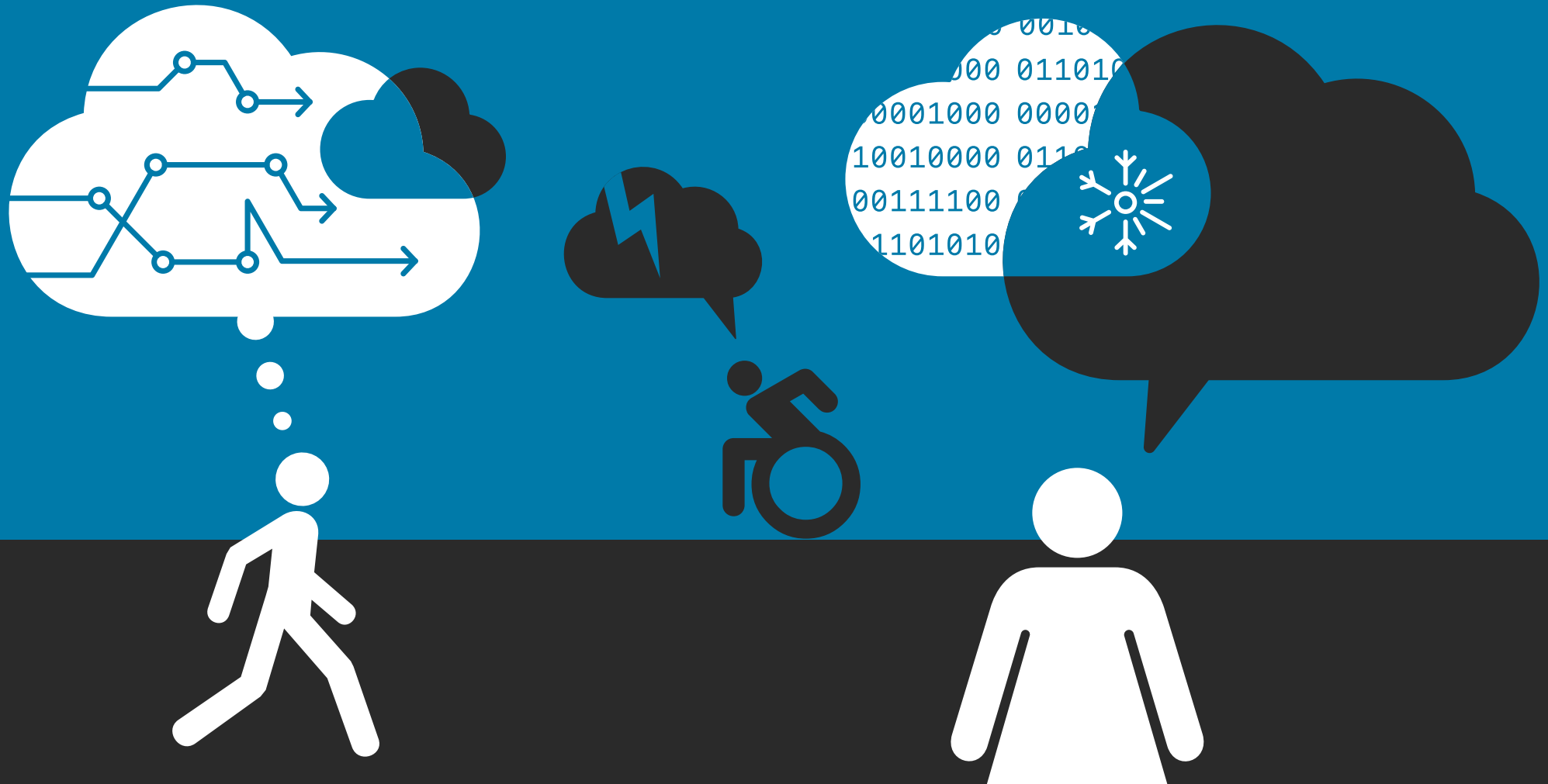
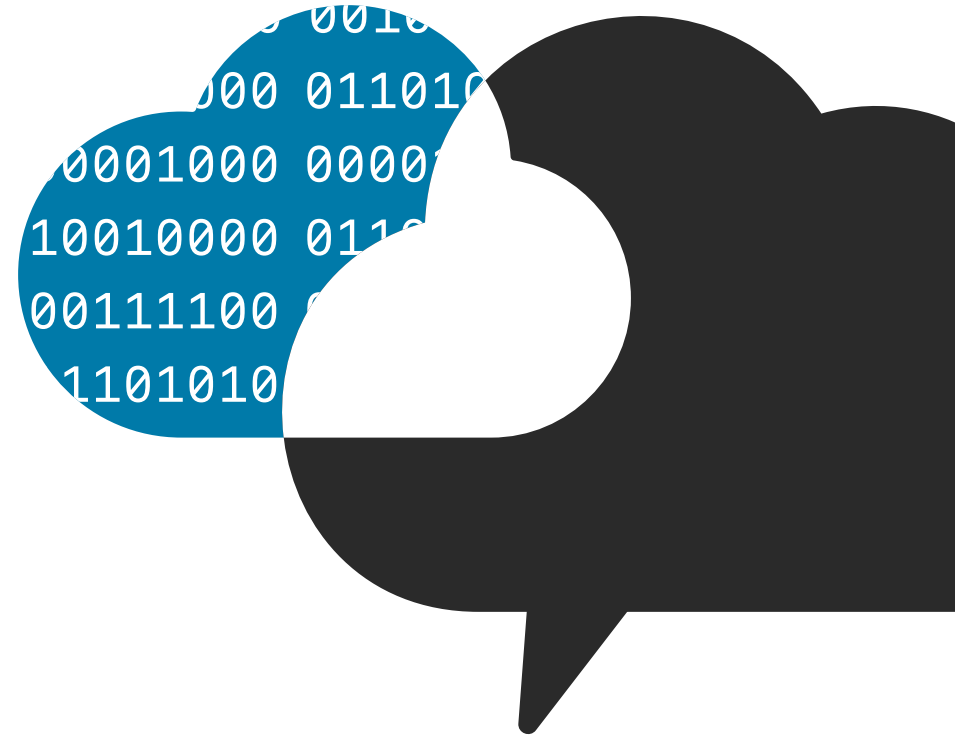


Weather warriors



How weather and climate information supports you and your community



Different types of severe weather



Research a severe weather event

Remember to consider:

- How were individuals and communities impacted?
- Who was most at risk? Why?
- What were the impacts?
- Were there incidents involving injuries, illness, hospitalisation?
- Was there risk of disruption to energy infrastructure or transport?
- What methods were used to mitigate the risks?
- How did emergency services, or other agencies respond?
- What causes events like this to occur? How likely is it to happen again in the future?

Find out more at
www.metoffice.gov.uk/schools

